

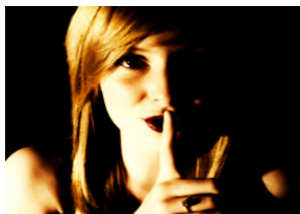
HAND IN HAND

Befriend a Child's Volunteer Newsletter
January 2011

A big **hello** and welcome to the January edition of Hand in Hand, the first of 2011! If you are reading this before Christmas, then I hope you have a good one. If it's now 2011, Happy New Year! 2010 will be a hard year to live up to for Befriend a Child with so many positives over the 12 months. But I'm sure we can do it. Expect the usual mix of ideas for outings, internal news and your own contributions. Remember we are always delighted to have your feedback on anywhere you've visited during the course of befriending.

FUNDRAISING CABARET

for **SHHH...THE MUSICAL**
and **BEFRIEND A CHILD**



Befriend  Child

turn a frown upside down

15th January 2011
7.30pm
The Acorn Centre, Inverurie
Tickets £8

www.shhhthemusical.com
www.befriendachild.org.uk

Befriend a Child will be the joint beneficiaries of a Cabaret Evening in Inverurie's Acorn Centre on Saturday, January 15th. The event has been organised by the team behind Shhh the Musical, which is being taken on tour to the 2011

Edinburgh Fringe Festival. To order tickets (£8), call the office on 210060.



I heart art is the latest arts facility in Aberdeen opened by local couple Janet Shek and Mitchell Liddell, who hope to bring the energy of Hong Kong to Aberdeen. This was where they first got the inspiration for the creative hub after living and working there for 2 years. The shop offers ceramic and canvas painting, studio hire, paint parties and craft classes and workshops.

Befriend a Child are offering a number of sessions during January and February, starting on **Saturday and Sunday, January 29th and 30th**. All sessions take place between **11am and 1pm** at the Galleria Centre on the junction of Bon Accord Street and Justice Mill Lane.

"We are really looking forward to the paint parties we are hosting with Befriend a Child, said Ms Shek. It's great that we can work together and bring art and craft to the children who may not get the opportunity to. We feel everyone can be creative to some extent — it's just tapping into those hidden talents! And not to mention everyone who takes part gets to take home the goods they

Create." To reserve a place at the sessions, please call **Andy or Jean on 01224 210060**.

HAND IN HAND

Befriend a Child's Volunteer Newsletter
January 2011



Hello & Goodbye

Hello to
Mary,
Carol-Jane,
Megan,
Barbara,
Craig,
Angie,
Kelsey,
Katie,
Steven,
Richard,
Laura
and Victoria

Goodbye and thank
you to
Gillian,
Lisa,
Emma,
Suzi
and Sasha

Congratulations to
Santa who won a
saucepan in a Xmas
raffle.

That's
what you
call Pot
Luck!
(Sorry!)



Christmas Carols Quiz—Just For Fun

If you find yourself bored with Xmas TV or looking for a quiet tea break with your Chocolate Orange, why not have a go at this little quiz—the answers to the acronyms are all Christmas Carols. The first answer is free! (You'll need to print the quiz off) Answers are on page 3

- | | | |
|----|--------|---------------------------------|
| 1 | AFTROG | Angels From The Realms of Glory |
| 2 | AIAM | _____ |
| 3 | DDMOH | _____ |
| 4 | GRYMG | _____ |
| 5 | GKW | _____ |
| 6 | HTHAS | _____ |
| 7 | ISTS | _____ |
| 8 | ITBMW | _____ |
| 9 | ICUTMC | _____ |
| 10 | JTTW | _____ |
| 11 | OCAZF | _____ |
| 12 | OHN | _____ |
| 13 | OLTOB | _____ |
| 14 | OIRDC | _____ |
| 15 | SATWS | _____ |
| 16 | SN | _____ |
| 17 | TFN | _____ |
| 18 | THATI | _____ |
| 19 | TLDB | _____ |
| 20 | WSW | _____ |





HAND IN HAND

Befriend a Child's Volunteer Newsletter
January 2011

January – What's On?

Happy Birthday
to the following
Staff/Volunteers

Caroline M

3rd

Carol P

3rd

Ashleigh A

8th

Angela M

8th

Elaine H

10th

Lynne S

15th

Rebecca R

16th

David M

18th

Megan P

19th

Rachel G

19th

Gail S

20th

Jillian M

24th

Catherine M

28th

Until Sunday 9th – Sleeping Beauty at HMT. Elaine C Smith heads the cast of this year's Panto in the role of the Wicked Fairy. Expect the usual combination of stunning 3d effects and spectacular sets. Prices start from £12 by calling the Box Office on 641122.

Throughout January – Molecules of Life exhibition at The Satrosphere.

An exhibition on tour from the University of York allowing visitors to build their own specific molecule and discover how and why these are made they way they are. On completing the molecule each visitor will get their very own certificate.

Sunday 16th – Wake Up It's New Year! A guided walk at the Chapel of Garioch Bennachie Centre from 10.30am to enjoy the tranquillity of the hills. Booking is essential on 01467 681470.

Saturday 29th – Big Garden Birdwatch in the Park. Take part in the RSPB's national winter garden bird survey by helping to record birds found in Banchory's Bellfield and St Ternan's parks. Participation is free but booking is essential on 013398 80868.

02	Away In a Manger	02	Three Little Drummer Boys	19
04	God Rest Ye Merry Gentlemen	04	The First Noel	17
06	Hark the Herald Angels Sing	06	See Amid the Winter Snow	15
08	In the Bleak Mid Winter	08	Oh Little Town of Bethlehem	13
10	Joy to the World	10	Oh Come All Ye Faithful	11
12	Oh Holy Night	12	It Came Upon the Midnight Clear	09
14	Once in Royal David's City	14	I Saw Three Ships	07
16	Silent Night	16	Good King Wenceslas	05
18	The Holly and the Ivy	18	Ding Dong Merrily on High	03
20	While Shepherds Watched	20	Angels From The Realms of Glory	01

Quiz Answers (from page 3)